



# BRACKETS

All brackets come with 5/16" set screws...vandal proof hardware & bolt thru applications are available

## STYLE #606

for flat blades, 3-1/4" blade holder



**Round Cap**  
for 2-3/8" post  
ksi#H606F2



**90 Degree Crosspiece**  
ksi#H606F90  
(45 degree also available  
ksi#H606F45)

### U-Channel Cap w/bolts

ksi#H606FU90 cap sits at 90 degrees to flange on post (pictured)  
ksi#H606FU180 cap sits at 180 degrees to flange on post



## STYLE #707

for extruded blades, 3-1/4" blade holder



**Round Cap**  
for 2-3/8" post  
ksi#H707EX2



**90 Degree Crosspiece**  
ksi#H707EX90  
(45 degree also available #ksiH707EX45)

### U-Channel Cap w/bolts

ksi#H707FEXU90 cap sits 90 degrees to flange on post  
ksi#H707EXU180 cap sits 180 degrees to flange on post

## STYLE #808

for flat or extruded blades, 5-1/4" blade holder



**Round Cap**  
ksi#H808F2 cap for 2-3/8" O.D. round post  
ksi#H808EX2 cap for extruded blade



**90 Degree Crosspiece**  
ksi#H808F90 for flat blade  
ksi#H808EX90 for extruded blade

### U-Channel Cap w/bolts

For Flat Blades...  
ksi#H808FU90 cap sits 90 degrees to flange on post  
ksi#H808FU180 cap sits 180 degrees to flange on post  
For Extruded Blades...  
ksi#H808EXU90 cap sits 90 degrees to flange on post  
ksi#H808EXU180 cap sits 180 degrees to flange on post (pictured)



## STYLE #808 LOCKE

Slide in slot for extruded blades, 5" blade holder



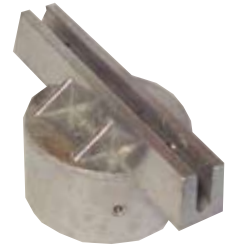
ksi#H808EXL2 cap for 2-3/8" O.D. round post  
ksi#H808EX90 90 Degree Crosspiece

**Round Cap**

## STYLE #809

for flat or extruded blades, 6" blade holder

for superior sign holding strength - U-Channel cap and 90 degree crosspiece also available



**Round Cap**

## STYLE #812

for flat or extruded blades, 12" blade holder



**Round Cap** for 2-3/8" post

ksi#H812F2 for flat blade  
ksi#H812EX2 for extruded blade

**Round Cap**

**Square Cap** for 2"x2" post  
ksi#H812F2SQ for flat blade

**90 Degree Crosspiece**

ksi#H812F90 for flat blade  
ksi#H812EX90 for extruded blade



## STYLE #827

for flat or extruded blades, 3-1/2" blade holder for 4" wood post



## STYLE #850

2"x2" Square cap for flat or extruded blades

SHORT - 3-1/4" blade holder  
LONG - 5-1/4" blade holder



**Square Cap**

## STYLE #909

for flat or extruded blades, 6" blade holder and tapped on 4-11/16" centers, Bolt thru application only

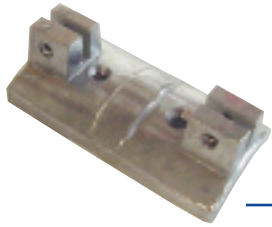


**Round Cap**

- U-Channel cap and 90 degree crosspiece also available



# BRACKETS



## STYLE #721

for flat blades  
ksi#H721

## STYLE #730

for extruded blades, with hardware  
ksi#H7306 for 6" blade  
ksi#H730675 for 6-3/4" blade  
ksi#H7309 for 9" blade (pictured)



## STYLE #10-10

**10-10** Cantilever Arm Bracket for flat or extruded blades ksi#H1010

<- 14 1/2" ->

Extension for 10-10 ksi#H1010EXT

10-10 Bracket with extension for a total of 29"



**318S with hardware**  
for 2-3/8" round post to mount one sign ksi#H318S

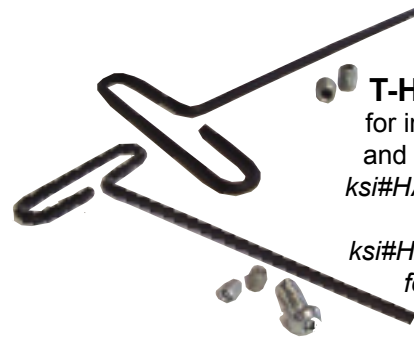
## 318D with hardware

for 2-3/8" round post to mount two signs back to back ksi#H318D



## TSA2X116 with hardware

for 2-3/8" round post to mount one sign ksi#HTSA2X116



## T-Handle Wrenches

for installation of standard and vandal proof hardware  
ksi#HA532VP 5/32" T-Handle for set screws  
ksi#HA316VP 3/16" T-Handle for vandal proof bolt



## HEN-6

for 6" Extruded Street Sign  
ksi#HHEN6



## HEN-9

for 9" Extruded Street Sign  
ksi#HHEN9



## HEN-12

to hold sign at 45 degree angle  
ksi#HHEN12



## Dome Cap

for 2-3/8" round post  
ksi#HCC250

## Pyramid Rain Cap

for 2"x2" square post  
ksi#HCC2



# Korman Signs, Inc.

HEADQUARTERS FOR TRANSPORTATION SAFETY AND FLEET GRAPHICS

3029 Lincoln Avenue Richmond, Virginia 23228-4295  
Phone 804-262-6050 Toll Free 800-296-6050 Fax 804-261-1040  
Email [korman@kormansigns.com](mailto:korman@kormansigns.com) Website [www.kormansigns.com](http://www.kormansigns.com)