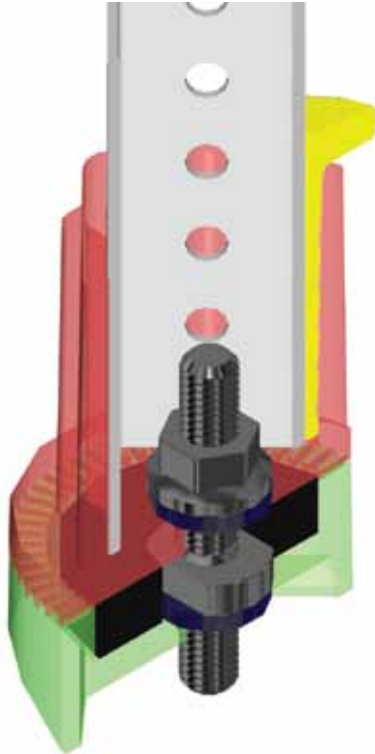


Kleen Break Model 425 Ground Mount

Sign Post Coupler • NCHRP 350 Tested, FHWA Accepted (SS-131)

Begin saving money & labor from first impact.



The key to the Xcessories Squared Kleen Break system is it's design.

- The Kleen Break system provides flush mounting so that after an impact, bottom portion shall remain flush with grade to prevent tripping hazard (s) to pedestrians.
- The Kleen Break system allows for 360° indexing, for proper sign orientation, after anchoring portion is permanently set.
- When properly installed, the Kleen Break supports the sign and post at 100% of the strength of the post for windloading, yet breaks away per NCHRP 350 criteria when impacted.
- All components of the Kleen Break system are reusable, with the exception of the shear bolt.
- Accepts 1¾" and 2" square post
- The Kleen Break system can be impacted from any direction with successful results.
- The Kleen Break system can be installed directly in soil, embedded in concrete or surface mounted on concrete.

Call KSI for more information 1-800-296-6050

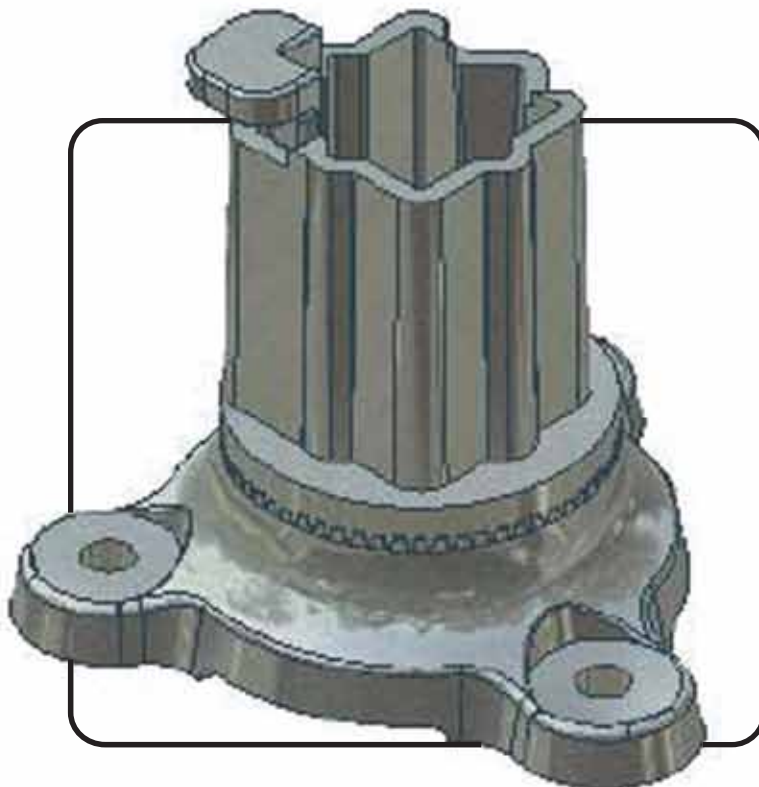
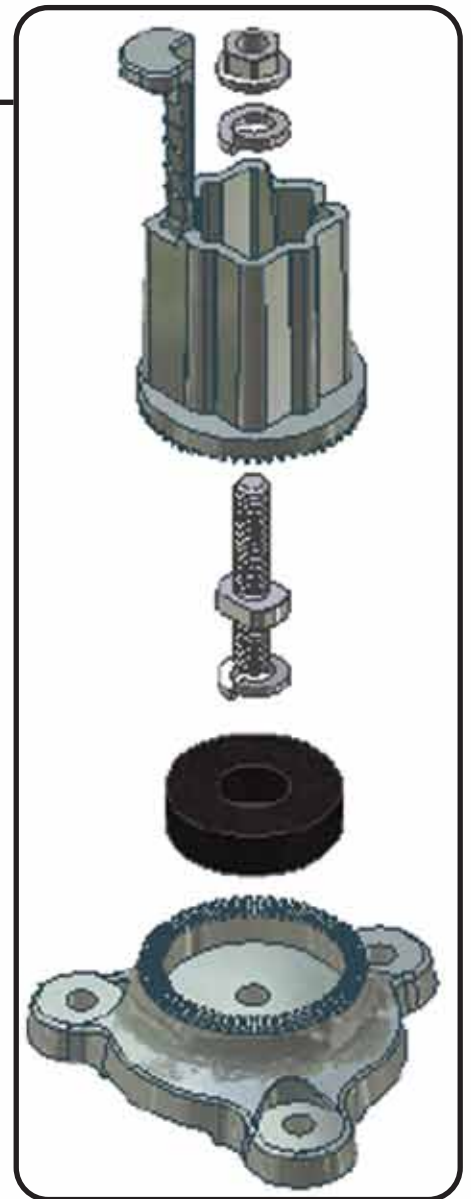
www.kormansigns.com


Korman Signs
INC.
HEADQUARTERS FOR TRANSPORTATION
SAFETY AND FLEET GRAPHICS

3029 Lincoln Ave. Richmond VA, 23228
Toll Free: 1-800-296-6050 Fax: 804-261-1040

Kleen Break Model 425 Surface Mount

NCHRP 350 Tested, FHWA Accepted (SS-131)



- Unit allows for 360° indexing for proper sign orientation after anchoring half is permanently set.
- Sign support is secured to coupler with the use of driveable locking wedge, which eliminates all tolerance between post and coupler without the need for threaded fasteners.
- All components of original installation are reusable with the exception of the shear bolt, which must be replaced after each impact. Reuse of rubber bushing and locking wedge is determined by their condition after impact.